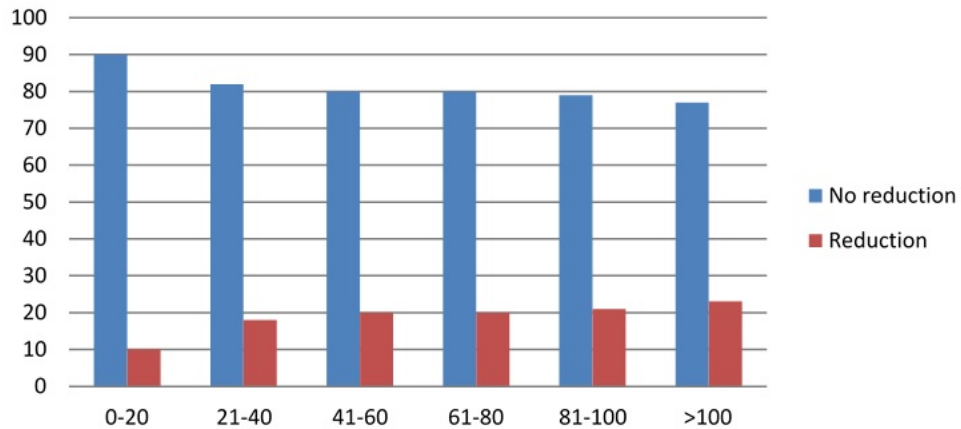


## PY 2017 Payment Reductions by Facility Size



The figure shows distributions of payment reductions by facility size category during Payment Year (PY) 2017. Facility size was determined based on the number of patients treated at the facility as of December 31, 2015. The percentage of facilities receiving a payment reduction in PY 2017 gradually increases with the facility size. The percentage of facilities receiving a payment reduction ranges from 10 percent for the smallest facilities (20 or fewer patients) to 23 percent for the largest facilities (over 100 patients).